

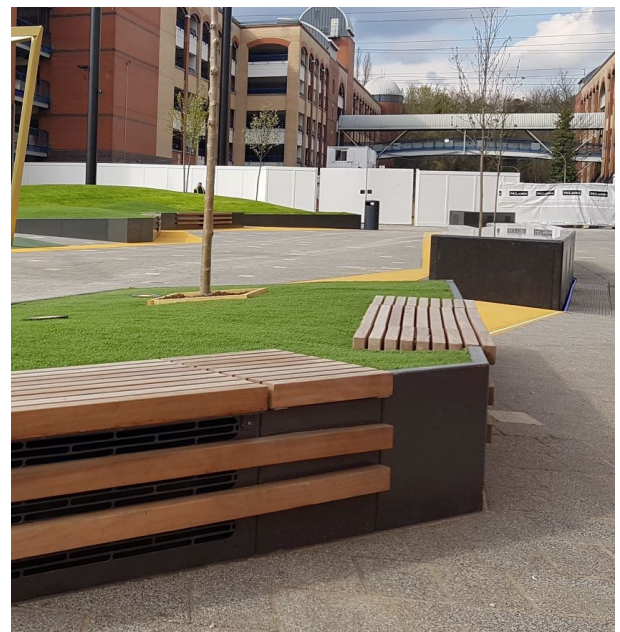
Modular Planter Wall Datasheet



Modular Planter Wall

The modular planter wall system permits unending flexibility in integrating greenery into a location. The system is made up of metal wall components that when connected can create both rounded and straight planter systems with the option of including quality wooden bench seating into the design. This makes all makes for a straight forward installation with a custom layout and finish.

Our modular metal planter walls are manufactured from machined, folded, and welded sheet metal and are available in a whole host of RAL colours, with the optional alternative of Corten Steel. Available in heights of 200mm, 400mm, 600mm, 800mm, 1000mm and 1200mm.



Modular Planter Wall

Planter Wall in powder coated sheet metal.

Material:

Structure of sheet metal with powder primer and powder coating; available in any RAL colour below, polyester-based paint, thicker than 80 microns (ISO 2630) and resistant to UV radiation or other climatic influences.

Additional option in shotblasted Corten steel sheet.

Optional timber seating that can be integrated into the planter wall.

Installation:

For the products installation, there are holes in the baseplates for anchoring embedment bolts into concrete foundations laid by others. Insert 10mm threaded bolts into holes drilled into the concrete slabs and fill with epoxy resin or fast motor.

Maintenance:

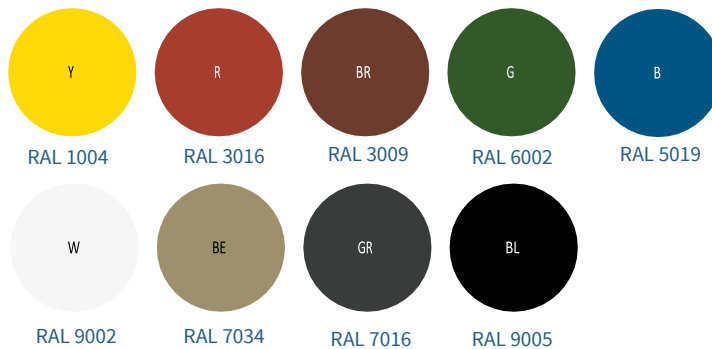
No maintenance required, except for cleaning and regular emptying.

Clean the metal parts using clean water only. If necessary, with a little neutral cleaning agent (pH 7) and soft non-abrasive cloths or cloths. For the most stubborn dirt, such as oily substances, gum, or stickers, clean with white spirit or isopropyl alcohol. The powder coated finish should be inspected every 6 months for damage. Any areas where the surface finish has been compromised or removed should be cleaned of debris, and re-covered using touch up paint. Colour matched touch up paint can be purchased from Landmark or a local paint supplier. (colour ref in spec)

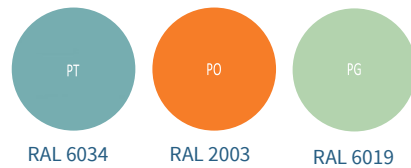
Timber - Manufactured entirely from carefully selected and graded wood. Sourced entirely from commercially managed, recognised and sustainable resources with a natural un-treated finish, to remove stains sand lightly with an appropriate grade sandpaper.

The wooden seat can be replaced if necessary.

Standard Colours



Pastel Colours



Metal



Standard Timber



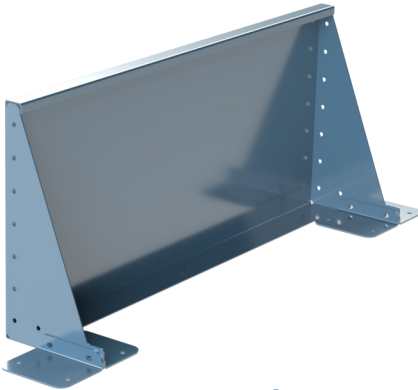
Modular Planter Wall



Modular Planter Wall



**600MM HIGH
CORTEN**



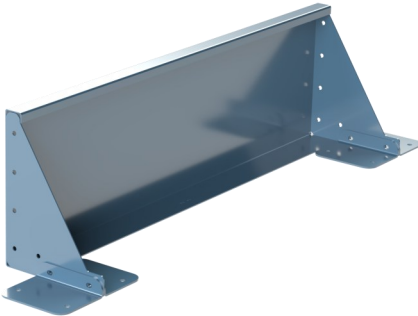
**600MM HIGH
ALUMINIUM
POWDER COATED**



**600MM HIGH
STAINLESS STEEL**



400MM HIGH



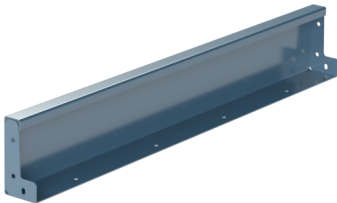
**400MM HIGH
ALUMINIUM
POWDER COATED**



**400MM HIGH
STAINLESS STEEL**



**200MM HIGH
CORTEN**

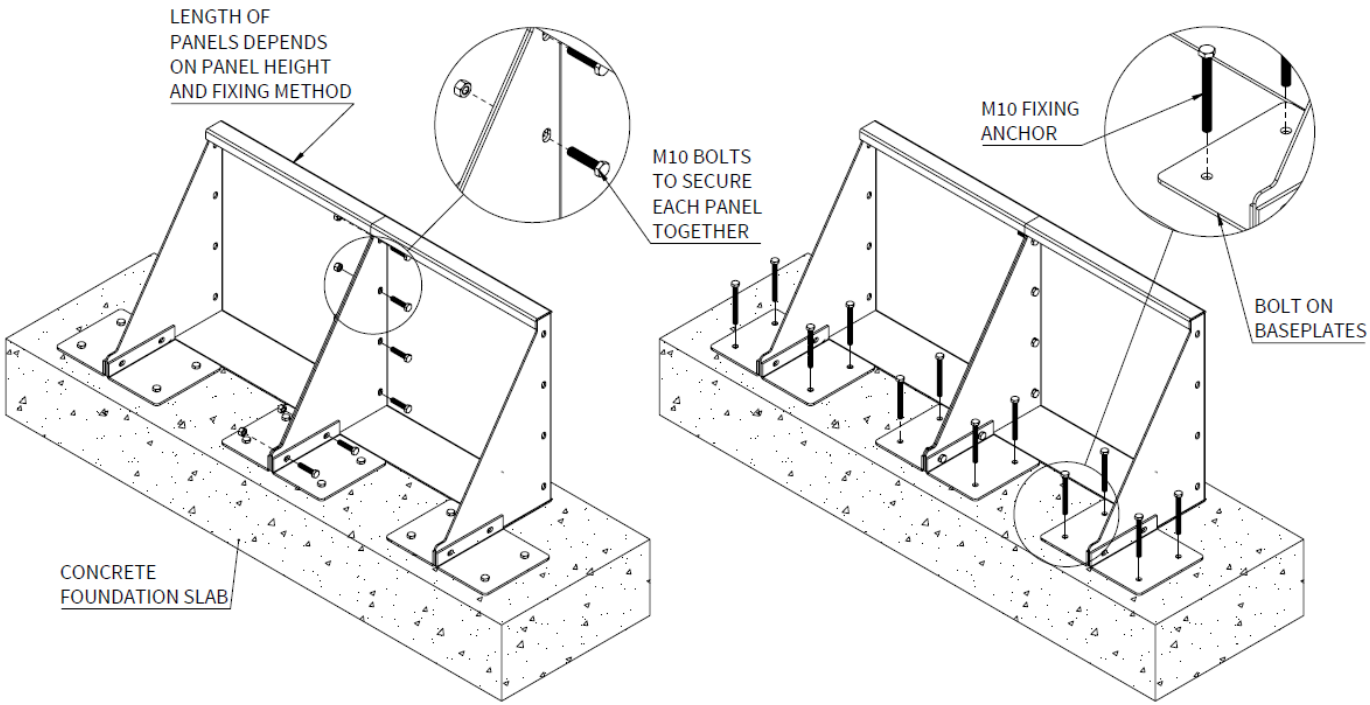


**200MM HIGH
ALUMINIUM
POWDER COATED**



**200MM HIGH
STAINLESS STEEL**

Modular Planter Wall



Modular Planter Wall



 Landmark
STREET FURNITURE

www.landmarkstreetfurniture.com