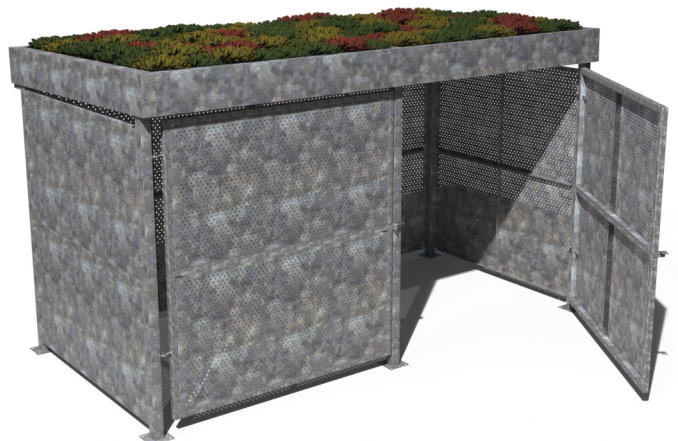
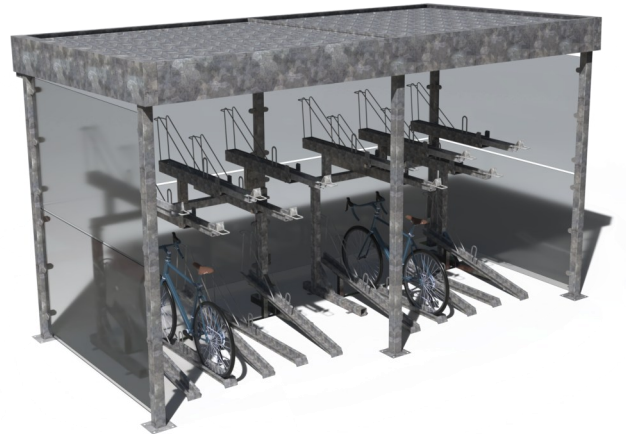
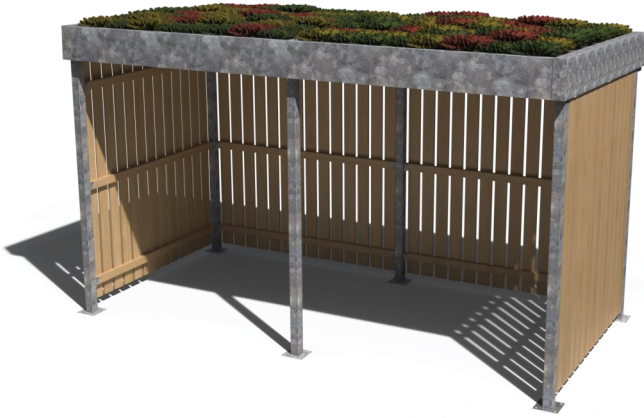


Modulo Shelter Range Datasheet



Modulo Shelter Range

The Modulo Shelter range is a steel framed shelter with a corrugated steel roof. The frame is fully welded, hot-dipped galvanised steel to provide lasting protection. The timber beams and cladding work equally well in both contemporary and traditional settings. The cycle shelter comes equipped with four Epsom cycle stands as standard, alternative models are available.

Materials Galvanised Mild Steel Frame / FSC Certified Timber - Optional Premium Accoya / Corrugated Steel Roof with Full Steel Fascia / Green Roof with Full Steel Fascia / Glass side panels / Metal side panels with laser cut designs.



Modulo Shelter Range

Modulo Shelters

Available lengths: 4500mm, 8920mm, 17760mm

Framework Material:

Manufactured from galvanised mild steel to BS EN ISO 1461:1999

Timber:

Wooden seat element of this product can be either Treated Softwood Thermowood, Iroko, Sapele or Accoya. With the option for these to be PEFC / FSC certified. All timber supplied planed all round with 4mm radius to all edges. A2 Stainless steel screws.

Installation:

For the products installation, product is designed to be self weight surface mounted. There is an option to drill holes in the base for anchoring embedment bolts into concrete foundations laid by others. Insert 12mm threaded bolts into holes drilled into the concrete slabs and fill with epoxy resin or fast motor.

Maintenance:

Metal - Manufactured from galvanised mild steel to BS EN ISO 1461:1999 - rinse thoroughly once every six months with a salt free wash and wax solution and polish with a soft clean cloth.

Timber - Manufactured entirely from carefully selected and graded hardwood / softwood. Sourced entirely from commercially managed, recognised and sustainable resources with a natural un-treated finish, to remove stains sand lightly with an appropriate grade sandpaper.

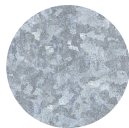
Check fixing connections every six months to ensure they are secure and tighten as required.

The wooden slats can be replaced if necessary.

Standard Timber

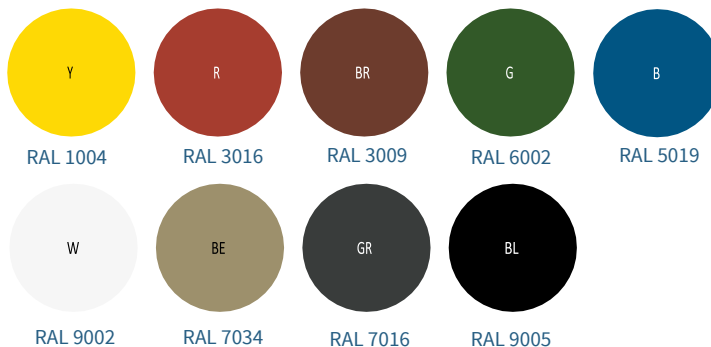


Metal Framework



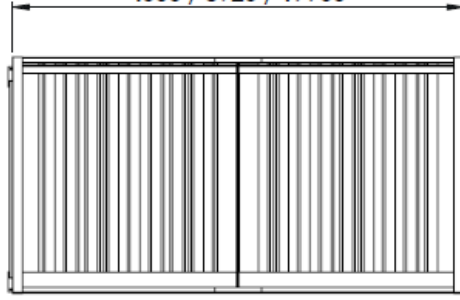
GALVANISED STEEL

Standard Colours

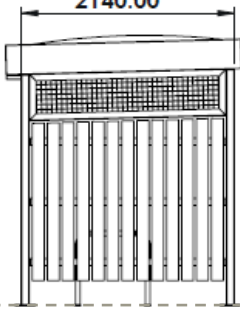


Modulo Shelter Range

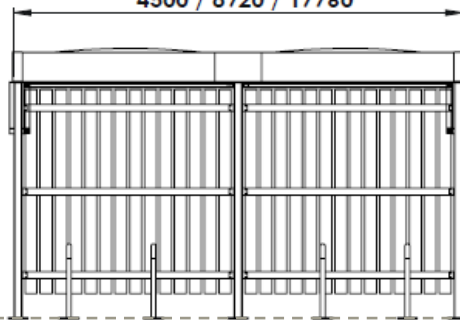
4500 / 8920 / 17760



2140.00



4500 / 8920 / 17760



2527.00
2900 TWO TIER
VERSION





Modulo Shelter Range

 Landmark
STREET FURNITURE

www.landmarkstreetfurniture.com