

Modular Planters 1000 Datasheet



 **Landmark**
STREET FURNITURE

www.landmarkstreetfurniture.com

Modular Planters 1000

The Modular Planter 1000 series arises with the intention of providing the space with that which is essential and permanent. Designed from a machined, folded and welded metal sheet, the elemental character of this series makes it a family with a special capacity for aggregation. This quality allows its use to be extended to environments with a unique historical context, susceptible to the emergence of certain materials or forms. It is manufactured from Aluminium sheet, baked powder paint, or shot-blasted Corten steel. RAL letter colour painted finish. Its installation is simply supported on the pavement or foundation, although it has an anchoring system, using threaded rods, if extra fixation is required.

1000 series is not just a planter collection, it also features the ability to connect all units together for biophilic integration. With unmatched customisation in colour finishes and layouts, the only limit to what can be created is the imagination.



Modular Planters 1000

Planter series in powder coated sheet metal.

- Planter A: 1000 x 1000 x 1000
- Planter B: 2000 x 1000 x 1000
- Planter C: 2000 x 2000 x 1000
- Planter D: 1000 DIA x 1000
- Planter E: 2000 DIA x 1000
- Planter F: 2000 / 1000 DIA x 1000

Material:

Structure of sheet metal with powder primer and powder coating; available in any RAL colour below, polyester-based paint, thicker than 80 microns (ISO 2630) and resistant to UV radiation or other climatic influences. Additional option in shotblasted Corten steel sheet.

Installation:

For the products installation, there are holes in the base for anchoring embedment bolts into concrete foundations laid by others. Insert 8mm threaded bolts into holes drilled into the concrete slabs and fill with epoxy resin or fast motor.

Maintenance:

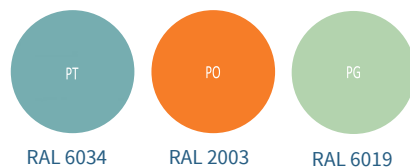
No maintenance required, except for cleaning and regular emptying. Clean the metal parts using clean water only. If necessary, with a little neutral cleaning agent (pH 7) and soft non-abrasive cloths or cloths. For the most stubborn dirt, such as oily substances, gum, or stickers, clean with white spirit or isopropyl alcohol. The powder coated finish should be inspected every 6 months for damage. Any areas where the surface finish has been compromised or removed should be cleaned of debris, and re-covered using touch up paint. Colour matched touch up paint can be purchased from Landmark or a local paint supplier. (colour ref in spec)

* Only stocked in this colour

Standard Colours



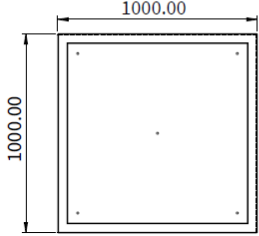
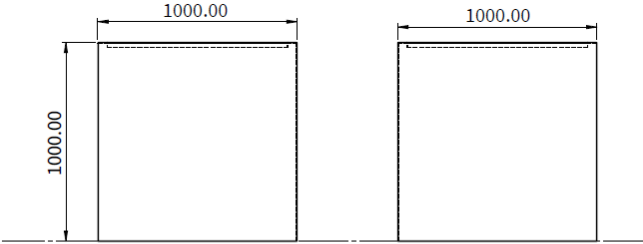
Pastel Colours



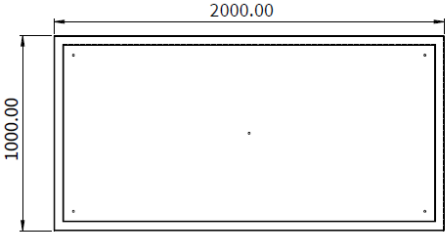
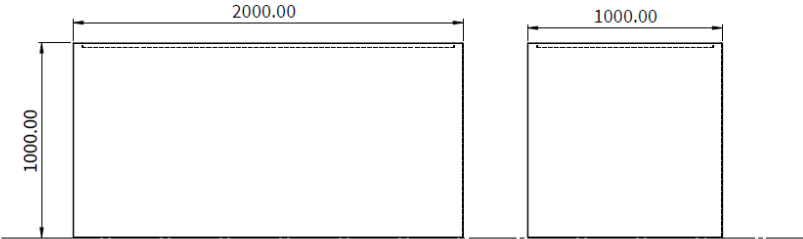
Metal



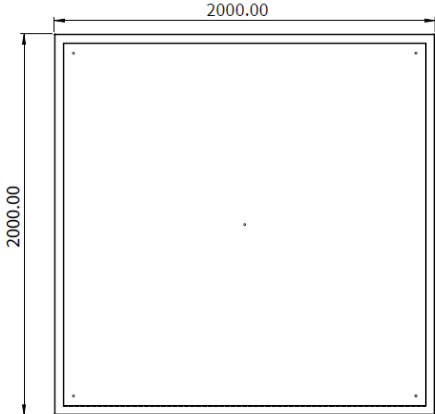
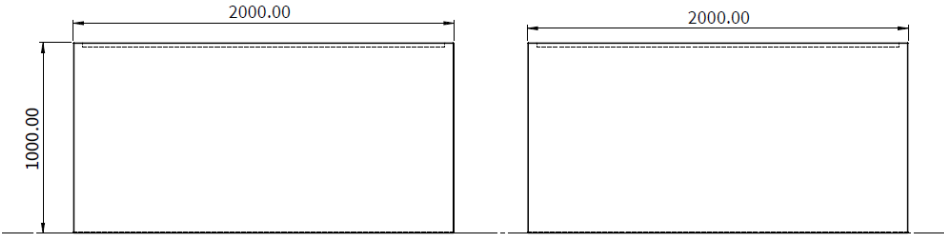
Modular Planters 1000



Modular Planter A - Specification

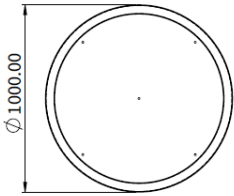
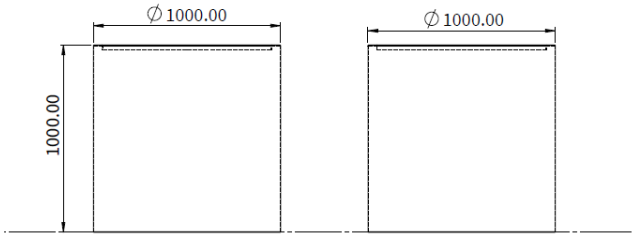


Modular Planter B - Specification

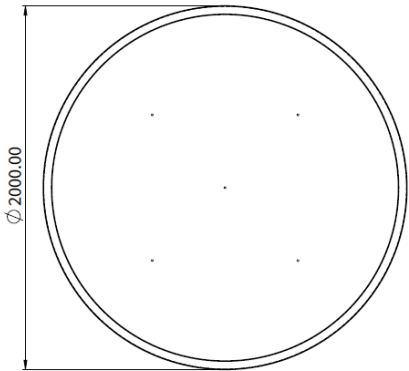
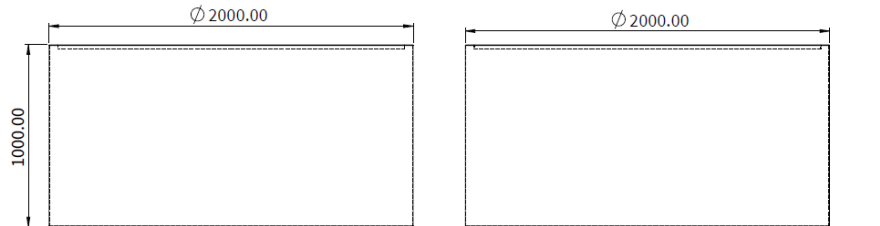


Modular Planter C - Specification

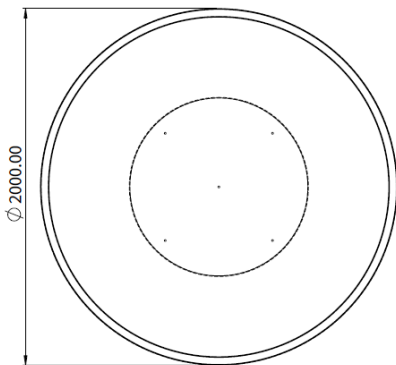
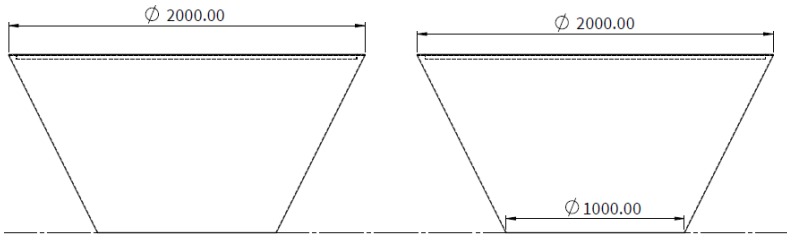
Modular Planters 1000



Modular Planter D - Specification



Modular Planter E - Specification



Modular Planter F - Specification

Modular Planters 1000



 Landmark
STREET FURNITURE

www.landmarkstreetfurniture.com