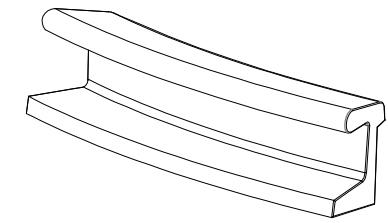


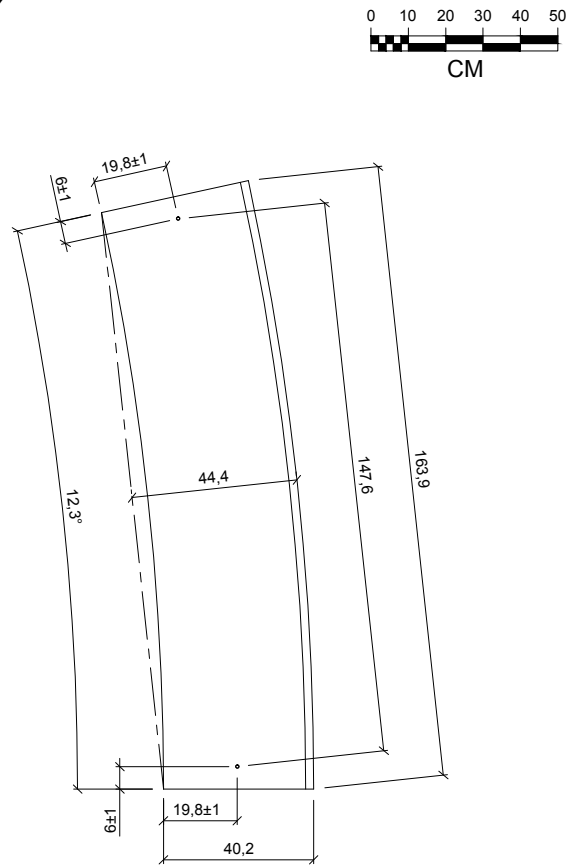
FEATURES

Material concrete petra 1
Finish scaled and waterproofed
Dimensions l. 163.9, w. 44.4, h. 49.6 cm
Colour see colour catalogue
Fixing resting on the ground or anchored with metal rod
Weight 380 kg
Package 180 x 50 x 65 cm
Weight package 395 kg

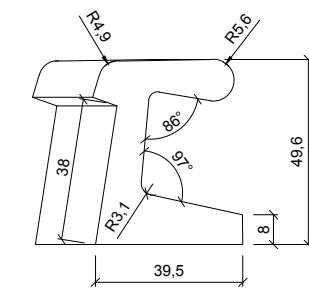


VINYES R726

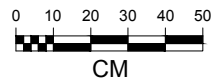
GEOMETRY



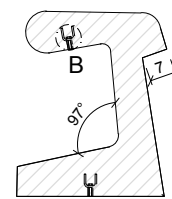
BOTTOM VIEW



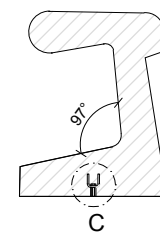
FRONT VIEW



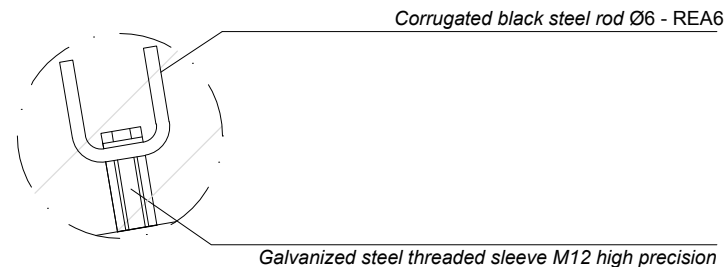
SPECIFICATIONS



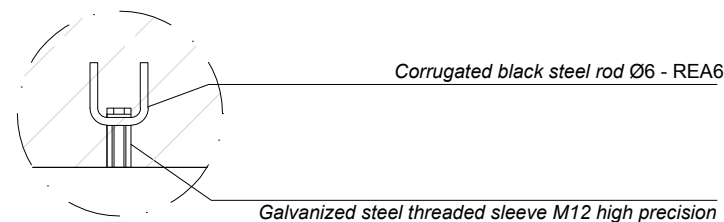
SECTION 1



SECTION 2



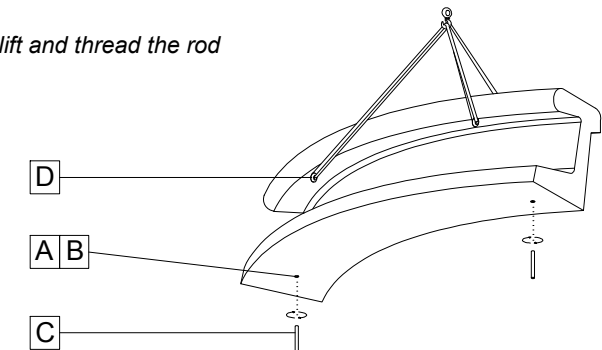
DETAIL B [HOISTING]



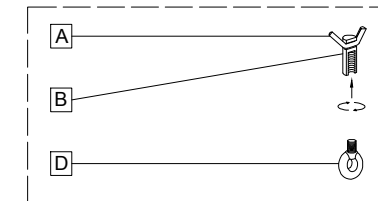
/ DETAIL C [ANCHORAGE]

HANDLING AND INSTALLATION

- 1 Thread the eyebolt, lift and thread the rod
 elevación / hoisting
 P= 380 kg

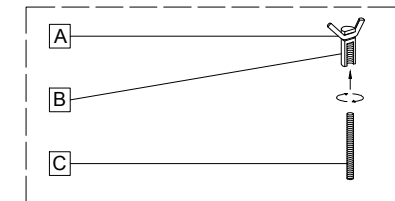


ANCHORAGE SYSTEM



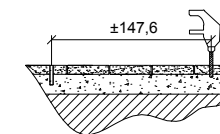
- A barra corrugada
- B threaded sleeve
- D eyebolt

LIFTING SYSTEM

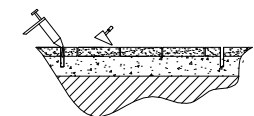


- A corrugated rod
- B threaded sleeve
- C threaded rod

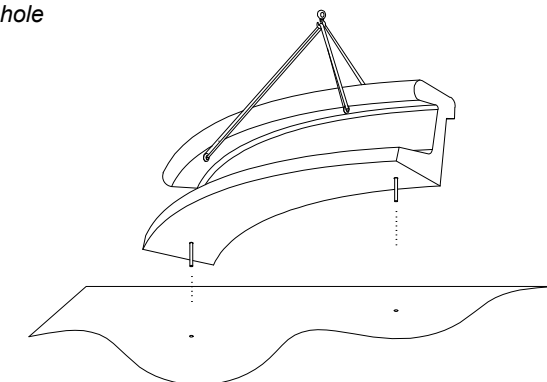
- 2 Drill 2 holes each at a distance ± 147.6 cm



- 3 Pour epoxy resin



- 4 Insert metal rod in hole



www.landmarkstreetfurniture.com